

# USER'S MANUAL

AIR CURTAIN WITH DUAL CONTROL SWITCH



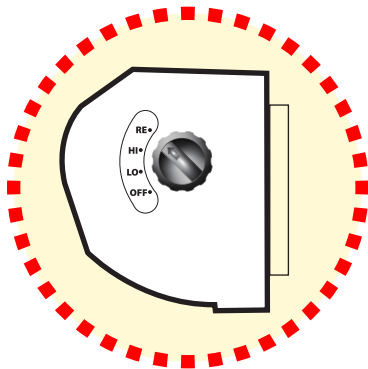
YMAC-60



YMAC-48



YMAC-36



## DUAL CONTROL SWITCH

built on the right side of the unit\*

*\* See the Operation Instructions inside*



CONFORMS TO ANSI/NSF-37  
SANITATION & UL-507 SAFETY



## YOSHIMASA USA, INC.

2730 Monterey St. #103, Torrance, CA 90503, USA

Tel. (310)533-1111/800-789-9835 Fax. (310)533-1117/800-789-9836

www.YOSHIMASAUSA.com, info@YOSHIMASAUSA.com

# Instruction Manual

READ AND SAVE THIS INSTRUCTIONS



## CAUTION

- READ and FOLLOW all instructions before operating the Air Curtain.
- Do NOT use fan if any part is damaged or missing.



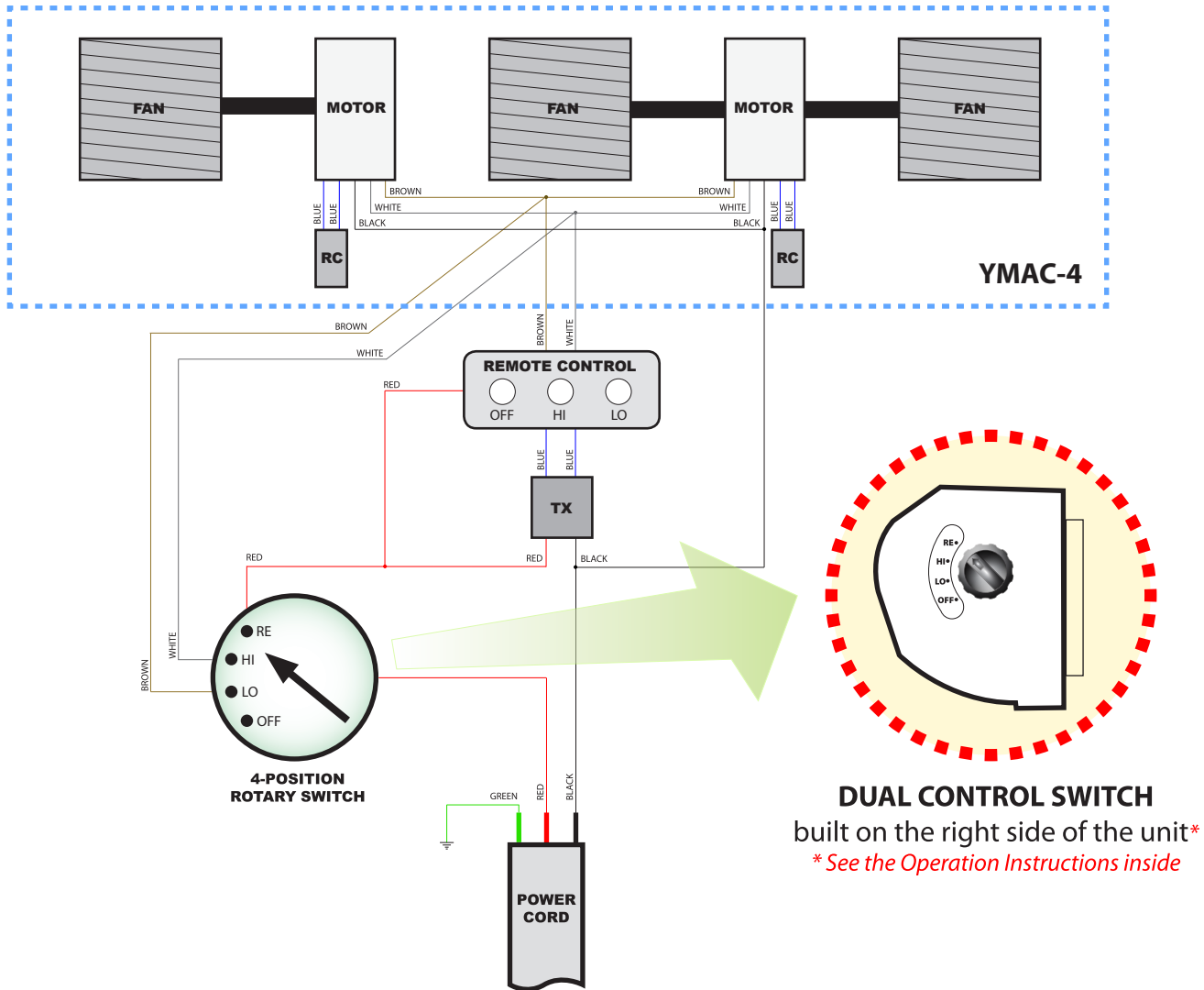
## WARNING

To reduce the risk of fire or electrical shock,

- Do NOT expose to water or rain\*
- Do NOT use the Air Curtain with any solid state speed control device.
- Do NOT use the Air Curtain in windows. Rain and moisture may cause an electrical hazard.
- Unplug the Air Curtain from power outlet when not in use, when moving from one location to another, or before cleaning.

\* Highly recommended is building an overhanging patio enclosure if you install the Air Curtain outdoor.

# 1. WIRING DIAGRAM



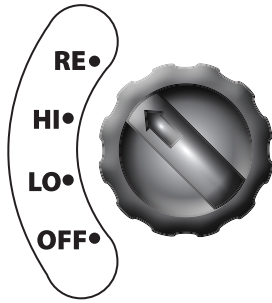
# 2. SPECIFICATION

MODEL	SIZE	LOW				HIGH			
		Current	Power	Velocity	Noise	Current	Power	Velocity	Noise
	Inch	A	W	m/s	dB	A	W	m/s	dB
YMAC-36	36	2.10	255	16	56	2.85	345	20	59
YMAC-48	48	2.65	320	16	56	3.50	425	20	59
YMAC-60	60	3.60	440	16	56	4.80	575	20	59

# DUAL CONTROL SWITCH OPERATION INSTRUCTIONS

**YOSHIMASA Air Curtain** now comes with a **DUAL CONTROL SWITCH** built on the right side of the unit and you can control the unit without rewiring using both the **Remote Control device** and the **Micro Door Switch** simultaneously.

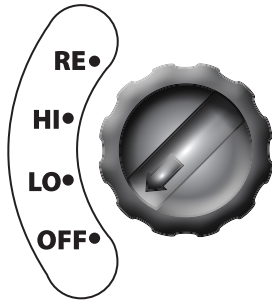
## ● Dual Control SWITCH Overview



Dual Control Switch is 4-position rotary switch and the function of each position is following:

- RE** : Operated by the Remote Control
  - HI** : High speed
  - LO** : Low speed
  - OFF** : Power Off
- HI and LO are operated by the Micro Door Switch

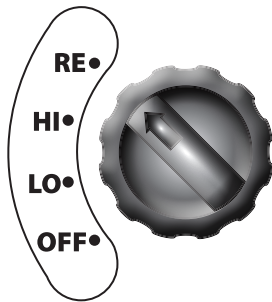
## ● How to shut down the Air Curtain



1. Just turn the Dual Control Switch to **OFF** position.
2. In this position both the **Remote Control** and the **Micro Door Switch** won't work.



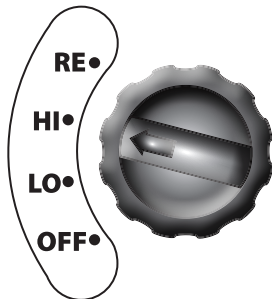
## ● How to operate using the Remote Control Device



1. Turn the Dual Control Switch to **RE** position.
2. Now you can select the **HIGH** or **LOW** speed from the **Remote Control** besides **Power Off** the Air Curtain.
3. In this position the **Micro Door Switch** won't work.

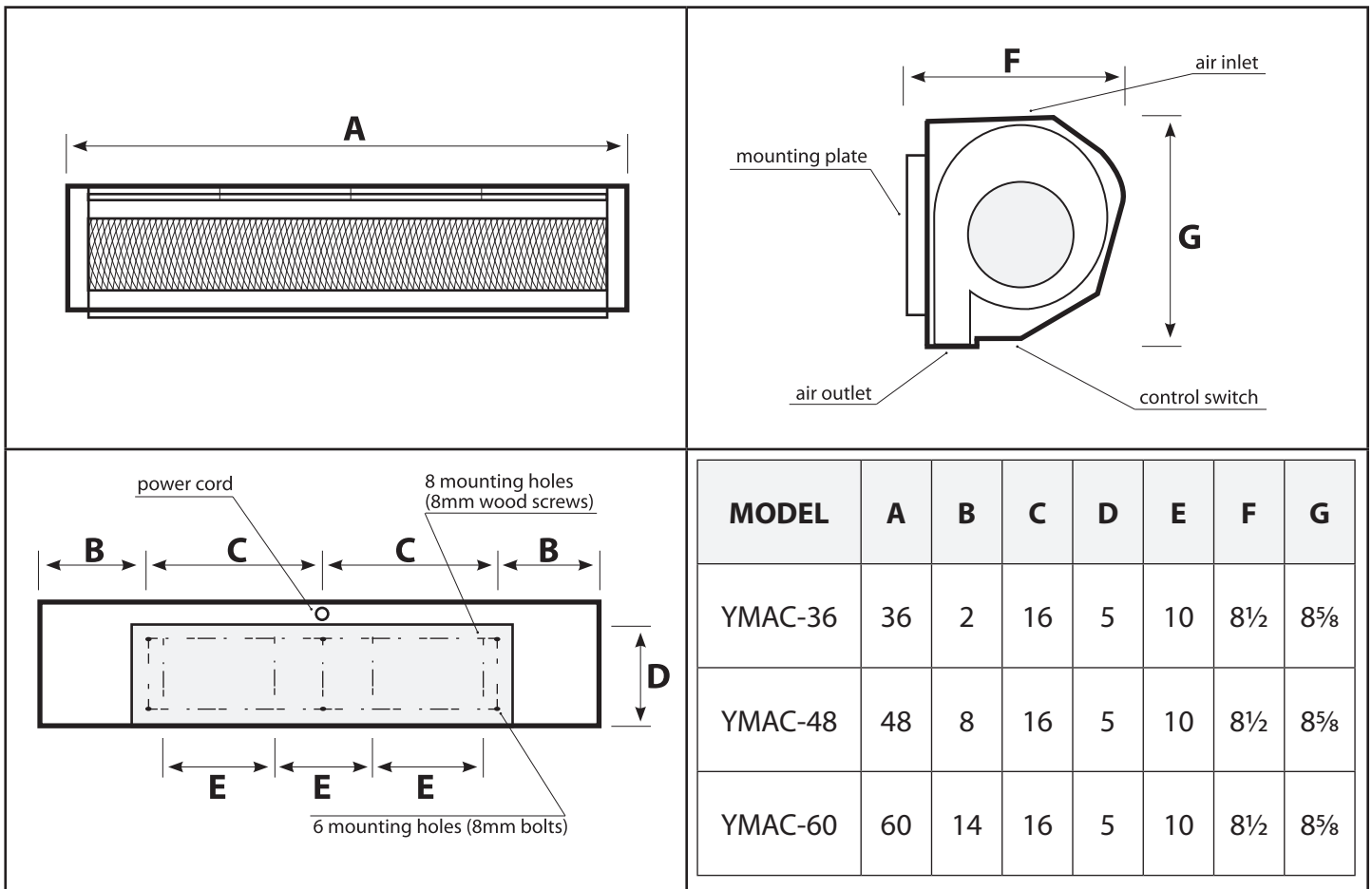


## ● How to operate using the Micro Door Switch



1. Turn the Dual Control Switch to **HI** or **LO** position.
2. Now the Air Curtain will be controlled by the **Micro Door Switch** only in the selected speed.
3. In this position the **Remote Control** won't work.

### 3. INSTALLATION DIMENSIONS



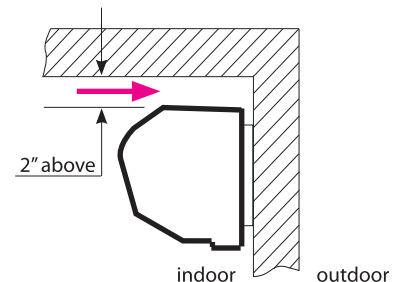
### 4. INSTALLATION METHOD



**WARNING**

Installation and electrical connection must be performed by a qualified technician.

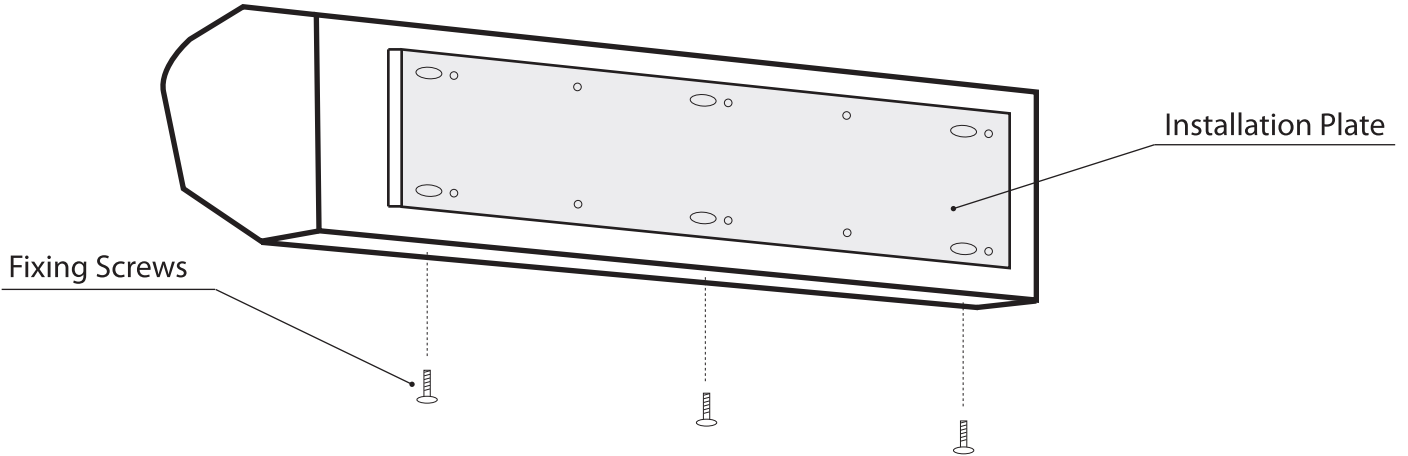
- 1) Accessories  
6 sets of (M8x60L) Fastening bolts, Washer, Spring washer, and (M8) Nut.
- 2) Check to ensure the voltage / frequency on rating label is complied with the local power source before use.
- 3) Follow the right diagram for installation position.



4) Coverage height: 12 feet (for horizontal Air Curtain installation).

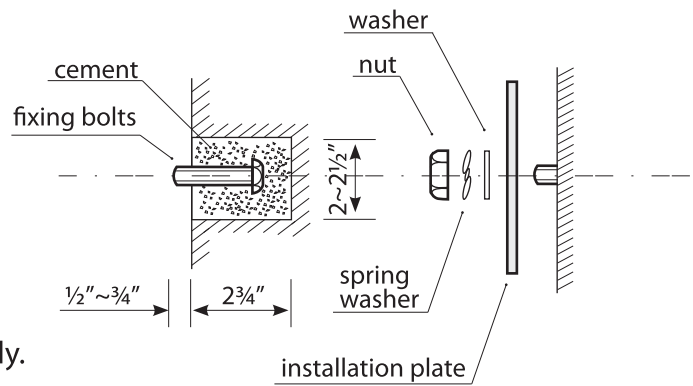
5) Installation on a concrete wall

a. Take down INSTALLATION PLATE (unscrew the fixing screws down the REAR).  
See the following diagram:

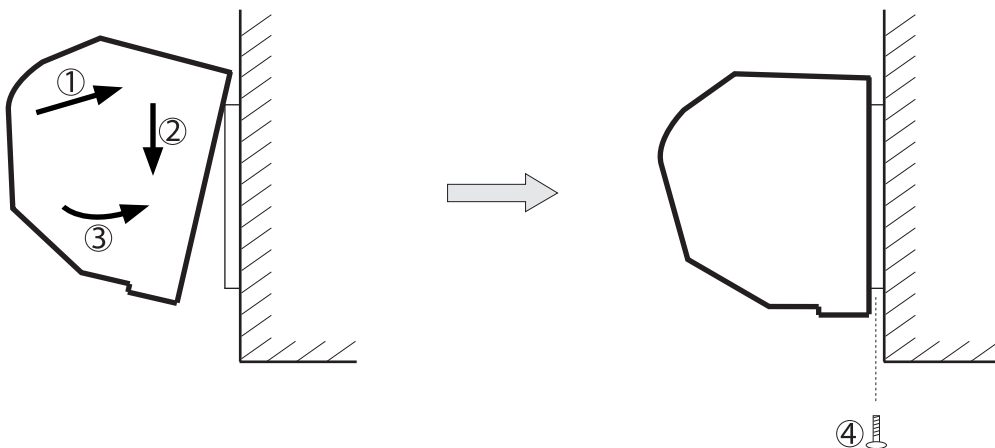


b. Install INSTALLATION PLATE on the wall:

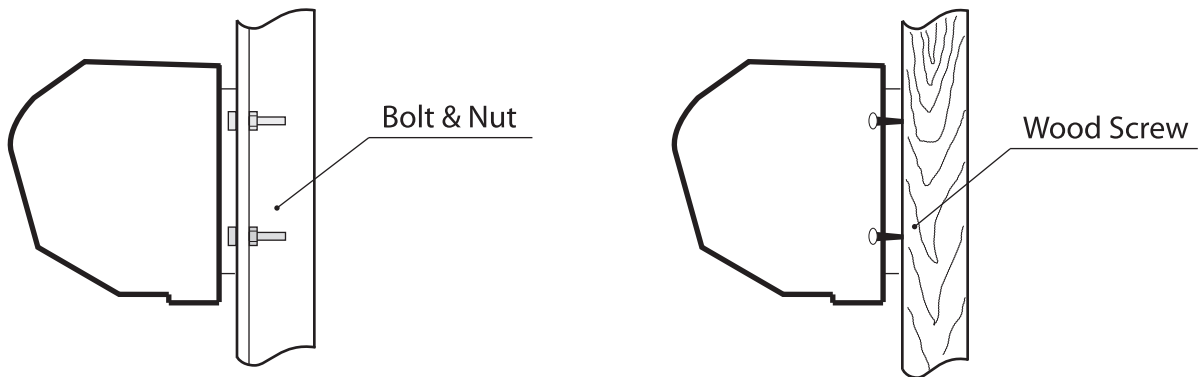
- Fix position of installation
- Insert bolts and fill with cement for consolidation
- After cement solidifies, install INSTALLATION PLATE on bolts and fasten it with washers, spring washers and nuts. See the diagram on the right
- Ensure INSTALLATION PLATE is fixed securely.



c. Install the BODY (hang up the BODY onto the INSTALLATION PLATE, check to ensure it is proper and secure, and then tighten the fixing screws). See the following diagram:



6) Other installation methods. See the following diagram:



**Installation on a Steel Framework**

**Installation on a Wooden Framework**

7) Use more than one unit of Air Curtain with appropriate length to fill up the width of the doorway.

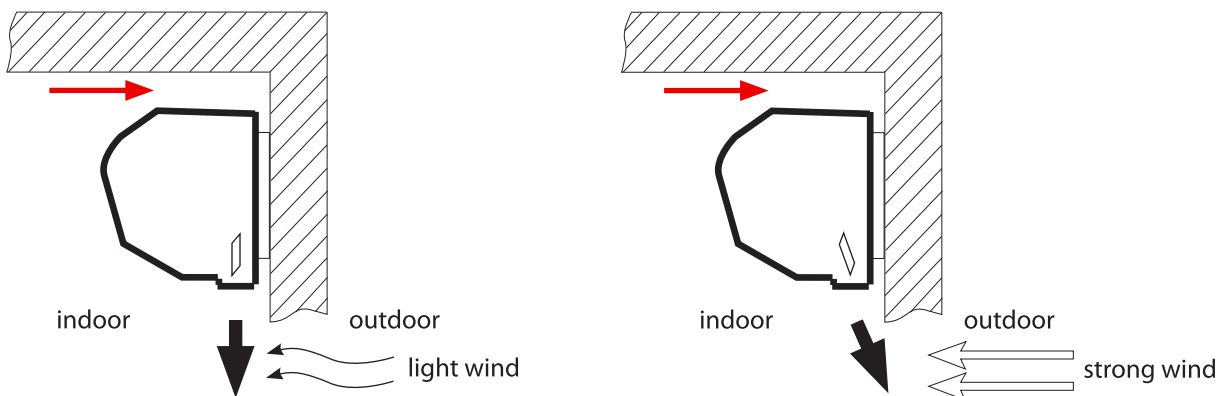
8) The recommended distance between 2 adjacent units of Air Curtain is to be 1-2 inches.

## 5. OPERATION INSTRUCTIONS

1) Plug-in to an AC power outlet. (OFF lamp lit with a high tone beep)

2) Select a key stroke of LO or HI to set the speed at LOW or HIGH.  
(or press a relevant function key stroke for the Remote Control device.)

3) Adjust AIR DEFLECTOR to preferred direction. See the following diagram:



## 6. CAUTIONS AND MAINTENANCE

- 1) Install at location firmly enough for safety, check installation quality periodically.
- 2) Do NOT install Air Curtain at location with water-splash, or with permanent exposure to high temperature and places close to explosive and corrosive gases.
- 3) Have reliable earthing set when use.
- 4) In case of damage or breakdown, should consult qualified technician.
- 5) Clean Air Curtain periodically. (Note: Do NOT clean unit with benzene or corrosive liquid.)



### **WARNING**

Please unplug the power cord before cleaning.

## 7. REMOTE CONTROL (optional)

Remote Control is available at YOSHIMASA USA. Please call at 1(800)789-9835



**Remote Control  
(optional)**

## 8. MICRO DOOR S/W INSTALLATION

See attached instruction guide or please visit [www.YOSHIMASAUSA.com](http://www.YOSHIMASAUSA.com).





# MICRO DOOR SWITCH INSTALLATION GUIDE

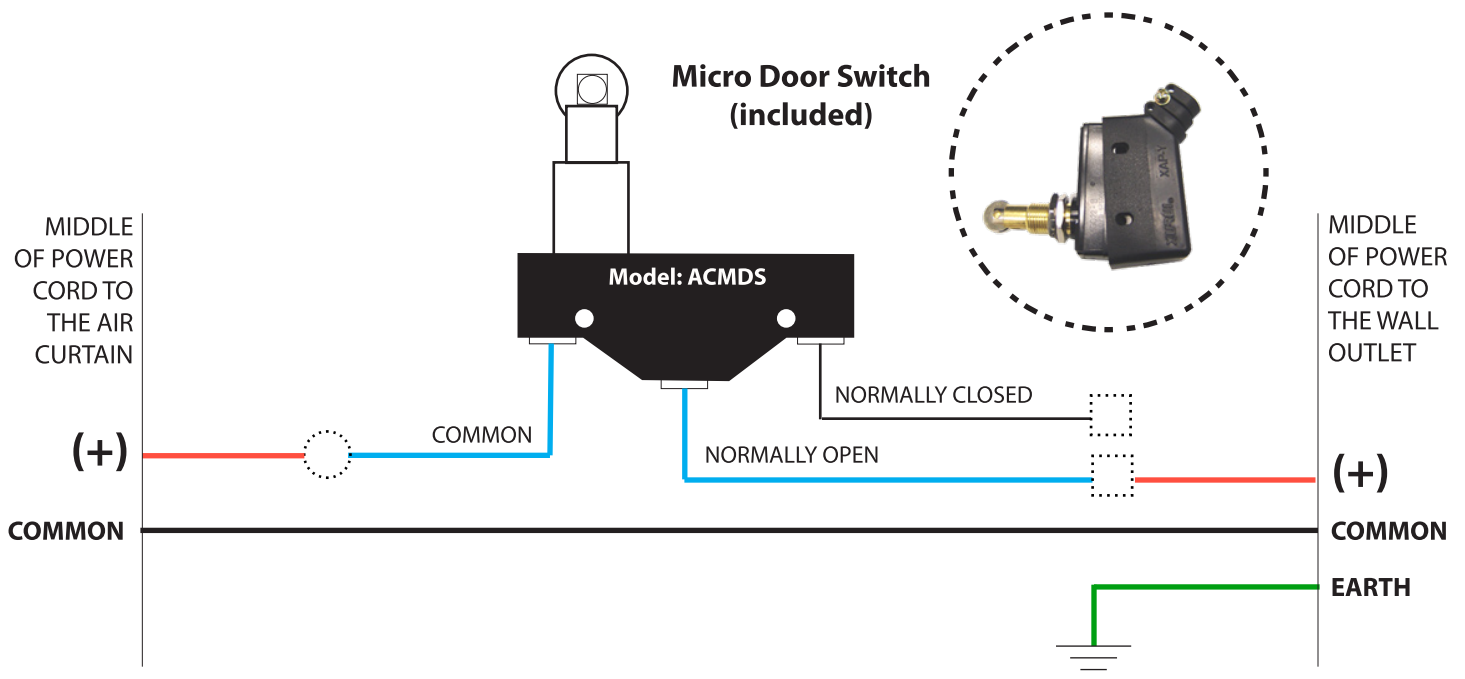
## **WARNING**

Must have a qualified electrician install the air curtain.

1. Remove the front grill.
2. Locate a proper place and Install the Micro Door Switch at the door opening.
3. Wire the Micro Door Switch according to the illustration below.
4. Carefully replace the front grill.
5. Plug in Power cord to operate.

## **CAUTION**

**ELECTRIC SHOCK HAZARD** : Please unplug the power cord before working.



## WARRANTY CERTIFICATE

### Warranty Valid In USA & CANADA Only

#### Warranty Information

YOSHIMASA Air Curtain model named YMAC-36, YMAC-48 and YMAC-60 has 1 year limited parts and labor warranty from the date of purchase. The warranty registration form attached in this manual must be properly filled and send it to YOSHIMASA USA within (12) days from the date of purchase. **Failure to warranty registration will automatically void all warranties. YOSHIMASA USA warrants to the original purchaser.**

#### Warranty Claims

All labor claims or parts must include copy of original invoice submitted directly to YOSHIMASA USA. All claims must include: a copy of original invoice (Customer Name, Customer Address, Model Name, and Date of Purchase), Customer Name, Address, Phone Number, Model and Serial Number of the unit, Date of Purchase, Distributor Name, and a brief Description of complaint.

#### What Is Not Covered By The Warranty

**Warranty Is Not Transferable** - This warranty is not assignable and applies only to the original purchaser/user to whom delivered. Any such assignment or transfer will void this warranty and all other warranties implied.

**Improper Usage** - YOSHIMASAUSA is not liable in any way for parts or labor coverage for component failure or other damages resulting from improper usage or installation or failure to clean and/or maintain product.

**Outside U.S. & Canada** - This warranty does not apply to, and YOSHIMASAUSA is not responsible for, any warranty claims made on products sold or used outside the United States & Canada

**Improper Electrical Connections** - YOSHIMASAUSA is not responsible for the repair or replacement of failed or damaged components resulting from electrical power failure, the use of extension cords, low voltage, or voltage interference to the unit.

## SALES TERMS AND CONDITIONS

### Warranty Valid In USA & Canada Only

#### Freight Classes & Weights

All YOSHIMASAUSA products ship under various classifications and all weights are approximate. YOSHIMASAUSA is not responsible for any variations thereof. YOSHIMASAUSA will make every attempt to ship only by responsible and preferred carriers.

#### Customer's Freight Damage Procedure

Before signing the UPS or carrier's freight bill the customer should do the following:

##### VISIBLE DAMAGE:

1. Inspect shipment for ANY possible damage. If you are suspicious in any way then mark the carrier's copy of the freight bill "damaged". (DO NOT SEND IT BACK TO US UNTIL WE GIVE PERMISSION TO DO SO)
2. Make sure that the condition of the damage is noted on your copy of the freight bill and signed by the driver.
3. Ask them to send their agent to complete an inspection report.
4. Action must be taken by you to notify the carrier within 48 hours upon receipt. It is the responsibility of the carrier to provide you with a written report. After notifying the carrier and filing a damage report, then you should notify us.
5. Be sure to keep ALL cartons and merchandise for inspection.

##### CONCEALED DAMAGE

1. Action must be taken by you to notify the carrier within 48 hours upon receipt. After notifying the carrier and filing a damage report, then you should notify us.
2. Request for the carrier to send their agent to complete an inspection report immediately.
3. Be sure to keep ALL cartons and merchandise for inspection. (DO NOT SEND IT BACK TO US UNTIL WE GIVE PERMISSION TO DO SO)
4. Styrofoam may hide any hidden dents on the shipment that may not be visible. You must inspect all corners and grills thoroughly.

**ALL UNITS ARE INSPECTED AT THE WAREHOUSE PRIOR TO SHIPPING AND ARE CHECKED FOR ANY DAMAGES THOROUGHLY BEFORE BEING RELEASED!!!**

#### Product Returns

It is mandatory that returned product(s) and/or parts must be shipped prepaid, packed in the original carton, and be received in GOOD condition to be authorized credit to your account by YOSHIMASA USA. Do not send the damaged equipment back to YOSHIMASAUSA until you retain permission to do so. If you do, NO credit will be applied to your account and you will be held completely responsible for ALL returning shipping costs.

# SERVICE REQUEST FORM

Please use the following contact information for a Warranty Service Inquiry:

- Visit [www.YOSHIMASAUSA.com](http://www.YOSHIMASAUSA.com) and click REGISTRATION FORM under WARRANTY in the main menu
- E-mail us at [service@YOSHIMASAUSA.com](mailto:service@YOSHIMASAUSA.com) • Use toll free number : Tel. 1-800-789-9835, Fax. 1-800-789-9836
- Mail to the address: YOSHIMASA USA, 2730 Monterey St. #103, Torrance, CA 90503, USA

**ALL WARRANTY SERVICE INQUIRY MUST BE ACCOMPANIED WITH ORIGINAL INVOICE.**

*Customer Information*

NAME: \_\_\_\_\_ DATE: \_\_\_\_\_

*Contact Information*

COMPANY: \_\_\_\_\_

PHONE: \_\_\_\_\_ FAX: \_\_\_\_\_

ADDRESS: \_\_\_\_\_

*Product Information*

PRODUCT: \_\_\_\_\_

MODEL NAME: \_\_\_\_\_ SERIAL NUMBER: \_\_\_\_\_

DATE OF PURCHASE: \_\_\_\_\_ DEALER: \_\_\_\_\_

*Preferred service Date & Time*

PREFERRED DATE: \_\_\_\_\_ TIME: \_\_\_\_\_

*Warranty Registration*

HAVE YOU REGISTERED THE PRODUCT FOR THE WARRANTY?  YES  NO

**Failure to WARRANTY REGISTRATION of the product within 12 days from the date of purchase shall automatically void the warranty. Please verify your warranty status before request any services.**

*Problem Description*

PLEASE DESCRIBE THE PROBLEM OR WRITE COMMENTS



**YOSHIMASA USA, INC.**

2730 Monterey St. #103, Torrance, CA 90503, USA  
Tel. (310)533-1111/(800)789-9835 Fax. (310)533-1117/(800)789-9836  
[www.YOSHIMASAUSA.com](http://www.YOSHIMASAUSA.com), [info@YOSHIMASAUSA.com](mailto:info@YOSHIMASAUSA.com)

# WARRANTY REGISTRATION FORM

YOSHIMASA USA always strives to ensure that each of our customers is given convenient on-time service. Please complete the following form and send back to us. Failure to register the product within 12 days from the date of purchase shall automatically void all warranties. Please use one of following easy methods to register:

- Visit [www.YOSHIMASAUSA.com](http://www.YOSHIMASAUSA.com) and click REGISTRATION FORM under WARRANTY in the main menu
- E-mail us at [register@YOSHIMASAUSA.com](mailto:register@YOSHIMASAUSA.com) • Use toll free number : Tel. 1-800-789-9835, Fax. 1-800-789-9836
- Mail to the address: YOSHIMASA USA, 2730 Monterey St. #103, Torrance, CA 90503, USA

Name : \_\_\_\_\_ / \_\_\_\_\_ Company Name : \_\_\_\_\_  
first name last name

Address : \_\_\_\_\_ / \_\_\_\_\_ / \_\_\_\_\_ / \_\_\_\_\_ / \_\_\_\_\_  
street city state zip country

Contact: \_\_\_\_\_ / \_\_\_\_\_ / \_\_\_\_\_ / \_\_\_\_\_  
tel. fax. E-mail web site

Product: \_\_\_\_\_ / \_\_\_\_\_ / \_\_\_\_\_ / \_\_\_\_\_  
model name serial number date of purchase date of installation

Place of Installation: \_\_\_\_\_ / \_\_\_\_\_  
same address above (yes/no) if no, write the address where the product is installed

1. How did you first become aware of YOSHIMASA products ?  
 Sales Person       Internet       Magazine  
 Mouth-to-Mouth       Store Display  
 Catalogue       Others (please specify) : \_\_\_\_\_

2. When did you make your purchase decision ?  
 At the Store       Before visiting the store

3. What is your main source of information about Sushi Display Case ? (Choose up to 2)  
 Sales Person       Internet       Magazine  
 Mouth-to-Mouth       Store Display  
 Catalogue       Others (please specify) : \_\_\_\_\_

4. Which were the most important factors in purchasing this products ? (Choose up to 2)  
 Prior Experience       Feature Quality       Brand Reputation  
 Design       Price  
 Others (Please Specify) : \_\_\_\_\_

5. Which one best describes the primary reason for purchasing this unit ? (Choose up to 2)  
 Design       Brand Reputation       Price  
 Easy of Use       Good Feature  
 Size       Others (Please specify) : \_\_\_\_\_

6. How would you rate YOSHIMASA products overall ?  
 Excellent       Good       Fair       Poor

7. Would you consider purchasing another YOSHIMASA product in the near future ?  
 Yes, because : \_\_\_\_\_  
 No, because : \_\_\_\_\_

8. If yes, do you plan to purchase any more YOSHIMASA products soon ?  
Item you need : \_\_\_\_\_  
How soon : \_\_\_\_\_

9 Comments on anything :



**YOSHIMASA USA, INC.**

2730 Monterey St. #103, Torrance, CA 90503, USA  
Tel. (310)533-1111/(800)789-9835 Fax. (310)533-1117/(800)789-9836  
www.**YOSHIMASA**USA.com, info@**YOSHIMASA**USA.com